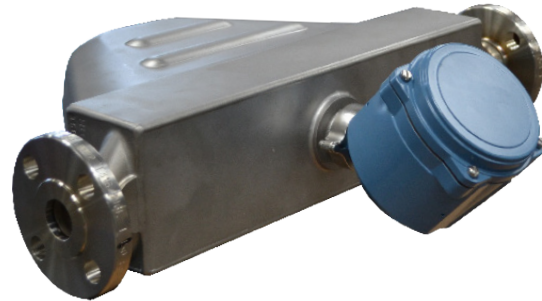




neptune RML2000

Mass Flowmeter for LPG



The Neptune RML2000 mass flowmeter pioneered fully electronic flow measurement and transaction management on the bobtail. With over a decade of success in mobile applications, Red Seal Measurement's Coriolis mass flow technology has proven to be efficient, reliable, and cost-effective.

Compared to traditional mechanical flowmeters, the RML2000 offers better accuracy, higher flow rates, and outstanding stability between yearly calibrations. This performance, combined with electronic temperature compensation, significantly reduces under-measurement of LP gas.

The meter's unobstructed dual vibrating tube design has no moving parts, increasing service life and lowering maintenance costs.

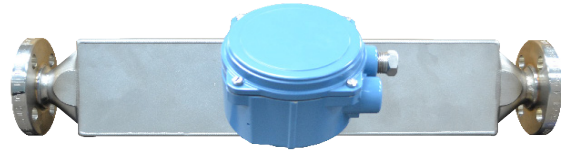
The Coriolis mass flowmeter provides volumetric flow measurement of LP Gas when interfaced with an electronic register. The system's outstanding flexibility gives an upgrade path not obtainable with competitive electronic transaction management systems. The space-efficient RML2000 system can be implemented on both new and existing vehicles. Retrofitting is easy using existing Red Seal Measurement vapor releases and differential valves.

The system provides stable accuracy, reduced maintenance, and fast payback, plus the most cost-effective upgrade path in the market — all backed by unmatched Red Seal Measurement support.

Experience the RML2000 today, and see the benefits of total electronic measurement.

Features and Benefits

- Reduced product losses between yearly calibrations
- No moving parts means more reliable operation, less downtime and longer life cycles
- Typical payback less than two years based on accuracy stability alone
- Electronic capture of all transaction data eliminates manual errors
-
- High-frequency electronic temperature compensation sampling for improved accuracy
- From simple pump and print to full electronic inventory management - all in one model without upgrades
- Communicates easily with office accounting and route management applications
- Red Seal Measurement service and support



Specifications

PHYSICAL	
Wetted Parts	316L stainless steel
Sensor Housing	304L stainless steel
Signal Transmitter	Aluminum
Weight (transducer only)	9.5 kg (21 lbs)
Line Size	51 mm (2 in.)

PERFORMANCE	
Weights and Measures Approved Volumetric Flow Rate	30 - 310 liters/min (8-82 gpm)
General Purpose Vol. Flow Rate	30 - 544 liters/min (8-144 gpm)
Mass Flow Accuracy	±0.2% of rate
Mass Flow Repeatability	±0.1% of rate
Mass Zero Stability	1.36 kg/hr (0.05 lb/min)
Volume Flow Accuracy	±0.2% of rate
Volume Flow Repeatability	±0.1% of rate
Density Accuracy	±0.002 g/cm ³ (±2.0 kg/m ³)
Density Repeatability	±0.001 g/cm ³ (±1.0 kg/m ³)
Temperature Accuracy	±1°C ± 0.5% of reading
Temperature Repeatability	±0.2°C

ENVIRONMENTAL	
Temperature range (E4000 Register)1	There is no ambient temperature limit for the transducer. Refer to register specifications.
Pressure rating	24 bar (350 psi)

APPROVALS	
Weights and Measures	Pending
Measurement Canada	Pending
UL and CSA	Class 1, Div. 2, Groups A, B, C & D (when properly connected to an approved register)

1310 Emerald Road
Greenwood, SC 29646
USA
Phone: 1.800.833.3357
Fax: 1.864.223.0341

