

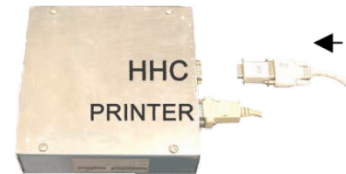
Quick START guide for the Neptune E4000 Configuration Software

Hardware Requirements

To connect your computer **Serial Port** to the E4000 Junction Box HHC Serial Port, (the port not occupied by the printer) use a Female DB9 to Female DB9 cable and a Null Modem adapter, or a Null Modem adapter, or a Null Modem Cable, i.e. Model # CC 2045-10N. The software can be downloaded to your computer from the Red Seal Measurement website.

To connect your computer **USB Port** to the E4000 Junction Box HHC Serial Port, use the previously mentioned cable with a Keyspan (Model: USA-19HS)

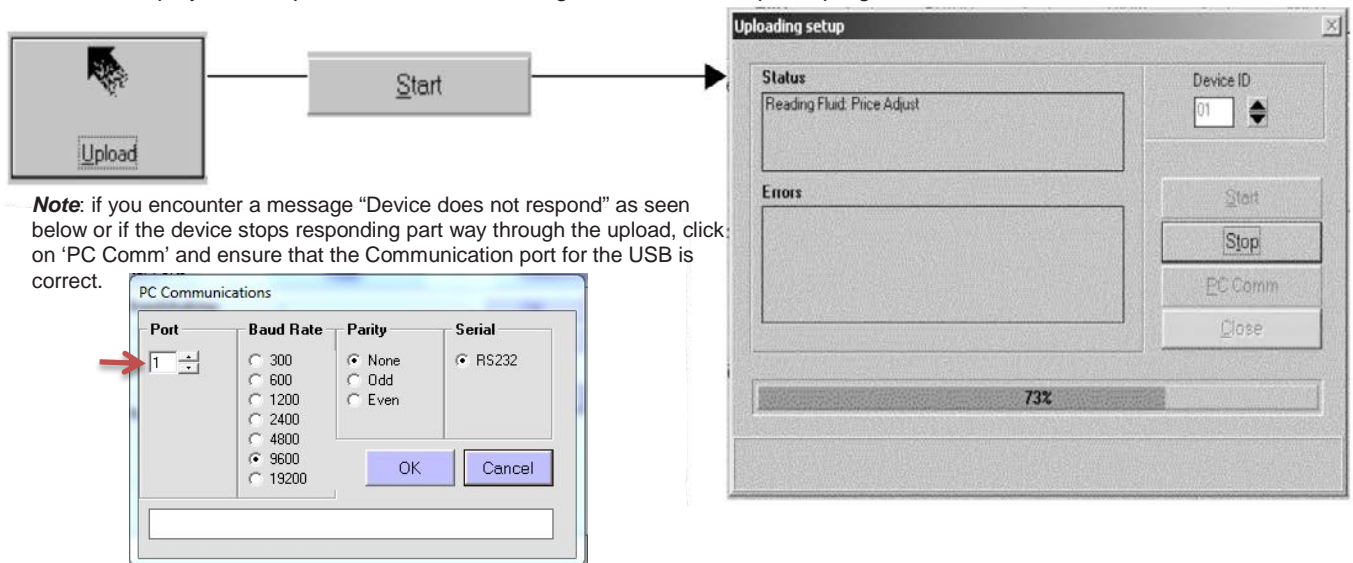
To install the software, please follow the prompts after downloading from Red Seal Measurement's website. Once installed, click on the Neptune E4000 Icon to enter the program. Click "Yes" to allow the program to run on your computer.



Uploading setup from the E4000

Use the upload command to retrieve the E4000 configuration Data **FROM** the register.

From the FILE tab click on the Upload" button to open the uploading setup window. Then press start to begin the upload. The Status box will display the setup information that is being received as the upload progresses.

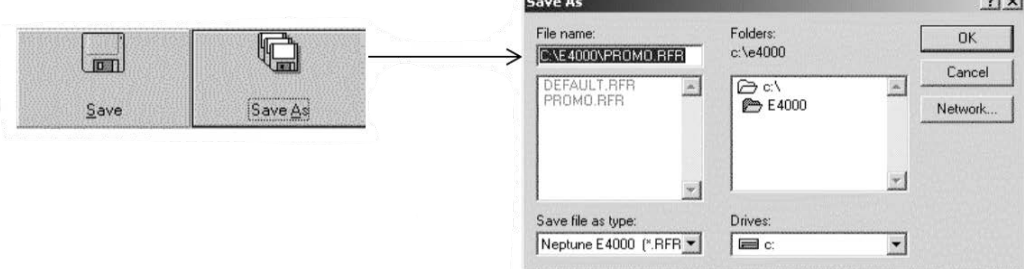


Note: if you encounter a message "Device does not respond" as seen below or if the device stops responding part way through the upload, click on 'PC Comm' and ensure that the Communication port for the USB is correct.

Port	Baud Rate	Parity	Serial
1	<input type="radio"/> 300 <input type="radio"/> 600 <input type="radio"/> 1200 <input type="radio"/> 2400 <input type="radio"/> 4800 <input checked="" type="radio"/> 9600 <input type="radio"/> 19200	<input checked="" type="radio"/> None <input type="radio"/> Odd <input type="radio"/> Even	<input checked="" type="radio"/> RS232

To save the E4000 configuration to your computer

From the FILE tab, click either the "SAVE" or "SAVE AS" button. The "SAVE AS" button will allow you to save the information with your choice of file name and select the folder in which to save the new file.

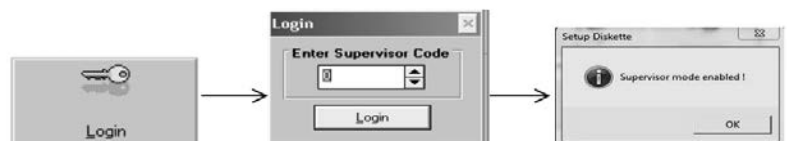


Save As dialog box showing file name: c:\e4000\PROMO.RFR, Folders: c:\, E4000, Save file as type: Neptune E4000 (*.RFR), Drives: c:

To download a configuration from the computer to the E4000

Use the Download command to send new or saved E4000 configuration data **TO** the register. The Download section is available only if you "Login" to Supervisor mode. From the FILE tab, click on "Login" and enter the correct password. Once Supervisor mode is enabled, from the FILE tab, click on the "DOWNLOAD" button to open the downloading setup window. Then press start to begin the download. You can choose which register information you want to change by checking the boxes in the download selection.

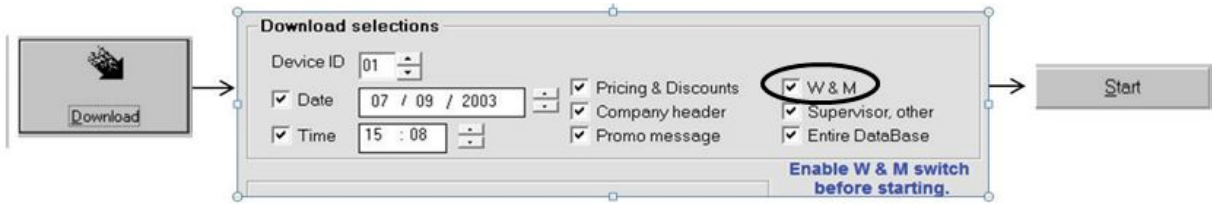
Note: If you do not remember the Supervisor password, it is possible to view the current register password in the E4000 System Setup report which is generated by clicking the Print Setup option under the FILE tab. See bottom right on page 4. The register password can be edited upon entering the Administration screen. The factory default password is 2000.



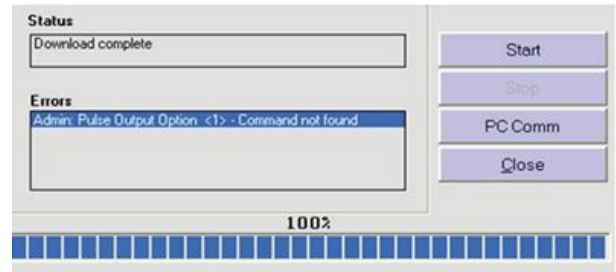
Login dialog box showing Enter Supervisor Code field and Login button. Setup Diskette dialog box showing Supervisor mode enabled!

To download Weights & Measures data

This includes product name, K-factor and Product Class/Temperature Compensation, the register has to be in Weights & Measures mode (must be blinking on Register Display). Then, ensure that W&M is checked under 'Download sections'.



NOTE: When downloading using 120 Product Configuration Program version, EC.03.01 into an E4000 with software that does not have the Pulse-Out option, this error will appear. This means that the PULSE-OUT option isn't found, but the remaining download will resume as normal.

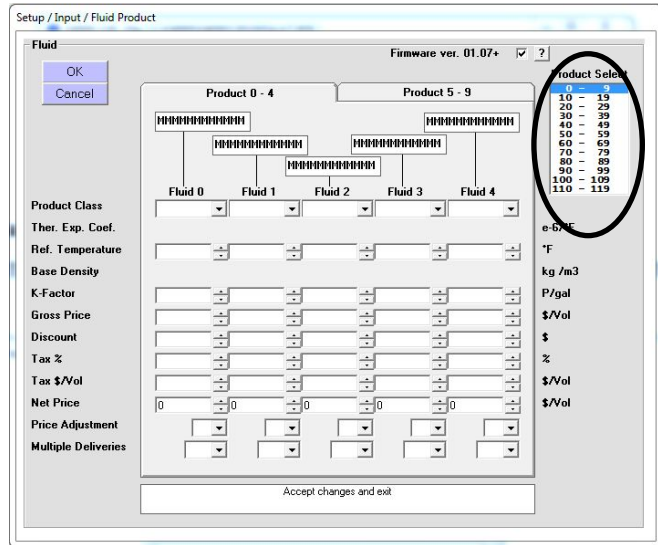
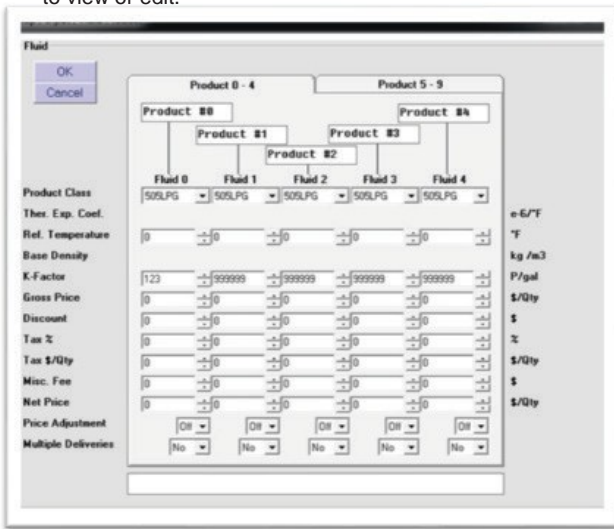


To program 10 (or up to 120) Products

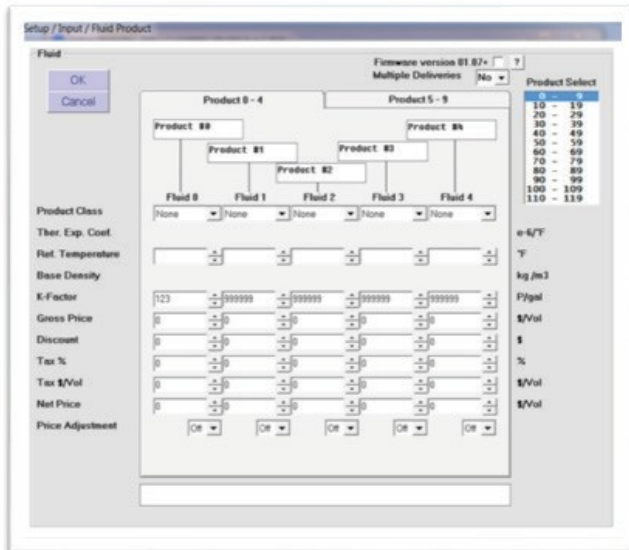
Select the Setup tab, the "Fluid Product" button to create new products or edit existing ones.

The default K-Factor is 999999, shown for products 1-4 below. Until the meter has been calibrated or a known K-Factor is input for these products, they will not appear in Route mode as an option to deliver.

NOTE: The 120 Product Software Table, located in the top, right corner of the Fluid Products setup menu allow selections of 10 products at a time to view or edit.



Note: The 10 Product Software allows the choice on each product. The 120 Product only gives one option for Multiple Deliveries for ALL Products; unless the checkbox to "Firmware version 01.07+" is checked. This permits multiple delivery option for each product.



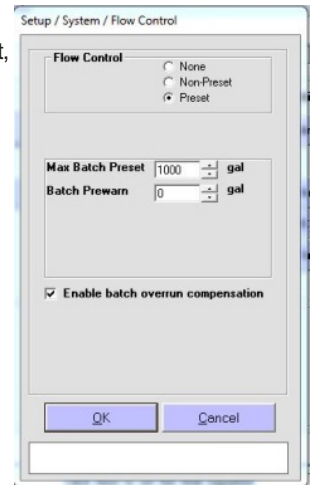
To Select Preset Quantities

Under the SETUP tab, there is a section for flow control. Here the deliveries can be set for Preset, Non-Preset, or None. Once Preset is chosen, options are then available for Max Batching, Prewarn, and Overrun Compensation.

Note: None is not to be used with LPG systems because it will not energize the Solenoid Valve and allow flow.

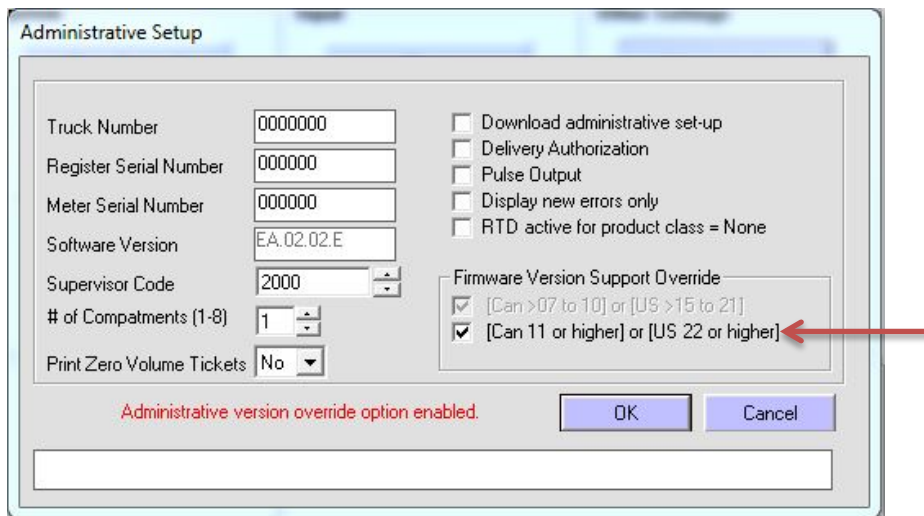
To insert Company Header & Promo Messages

From the Misc. tab, click on “Create Company Header” or “Promo Messages. Supervisor Mode must be enabled to insert Company Header; but not for inserting Promo Messages



To view Administrative Setup

Log in as the Supervisor and from the SETUP tab, click on the Administrative button. This allows you to view and edit register information as the Administrator before download. **Caution:** This screen also allows you to change the supervisor Code!

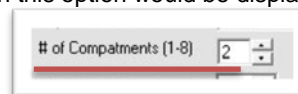


To do the setups below offered only in the 10 Product Version, User must be logged in as Supervisor and under Administrative Setup user must check the box stating use of Version “CAN 11 or US 22 or higher,” shown above.

To set up for Multiple Compartment Deliveries

Under the Administrative Setup shown above, use the up and down arrows to change the number of compartments. User can use up to 8 different compartments. If more than 1 compartment is chosen this option would be displayed on each delivery.

NOTE: Quantities for these compartments can only be set manually from register. The default amount is 5000.



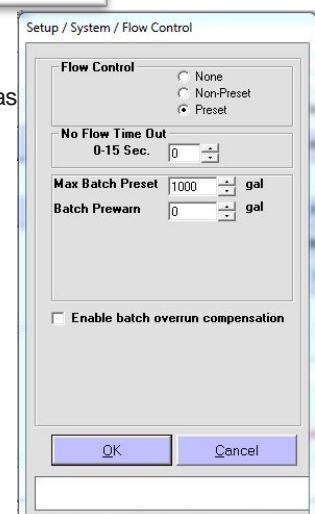
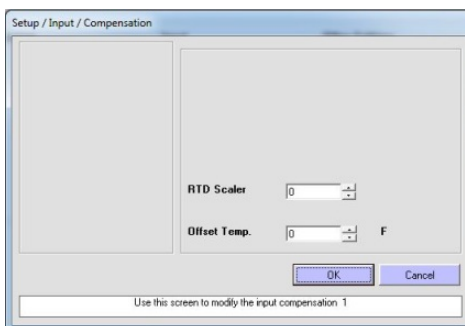
To Set a No Flow Timeout

A no flow timeout can be set so the printer will print a ticket within a set amount of time after no flow has been detected.

NOTE: This feature cannot be used with Multiple Deliveries.

For Temperature or RTD

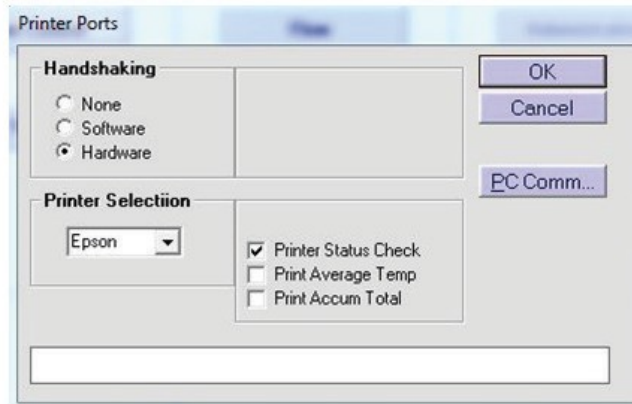
An offset temperature can be inserted. Under the Setup tab, use the arrows to insert a temperature. For Software Versions 02.11.E and 01.22.E, there is also an option to insert the RTD scaler.



To check Printer Ports

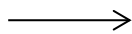
Under the setup tab, you will find the "Printer Ports" option. This enabled the selection of several printing options as well as to view or edit the type of printer and handshaking.

NOTE: If you have an Epson printer, select Hardware for the handshaking. For Blaster printers select Software.

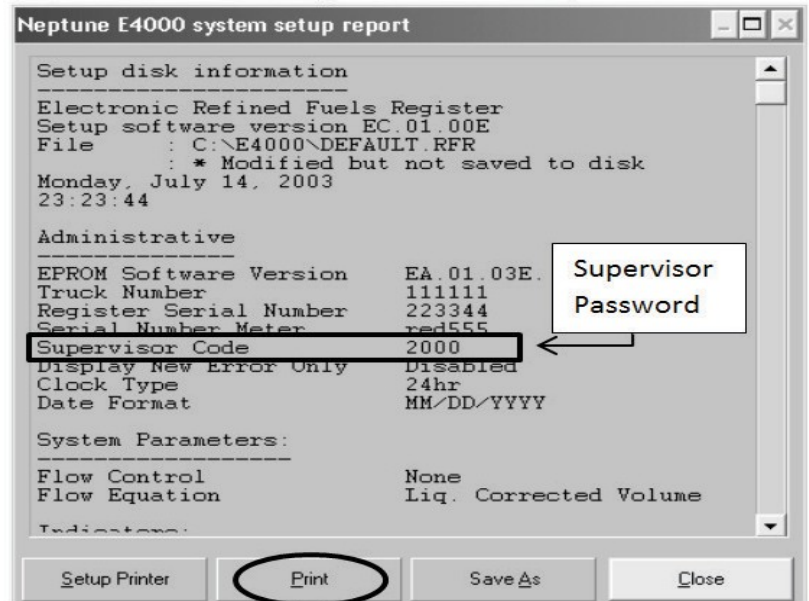
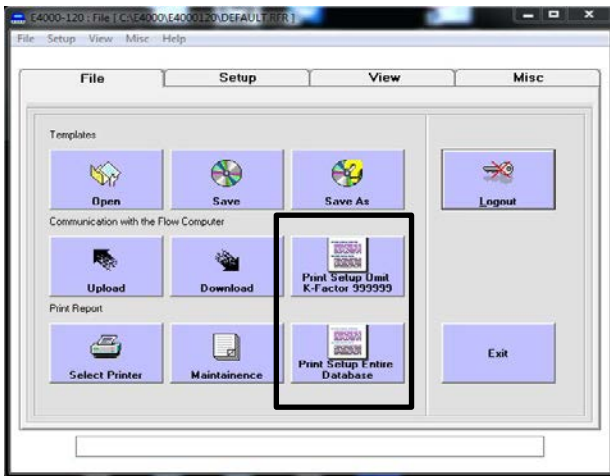


To print Register Data

The Print Setup function prints out all details of a configuration file. From the FILE tab click on the "Print Setup" button. A new window will show you the configuration setup. If you click on "Print" you will send it to your default printer.



NOTE: In the 120 Product Configuration program "Print Setup" is offered two ways, Entire Database or Omitting 99999 K-Factors. Omitting the 99999 K-Factors will allow you to only print the products you have set up and calibrated.



For additional detailed help with the Configuration Program, click on the HELP taskbar at the top of the screen.